

Scientists in Congregations: Water of Life

Meeting of Honley and Brockholes Learning Partnership

Minutes of meeting of 15th May 2017 at 7pm in St Mary's Church Honley

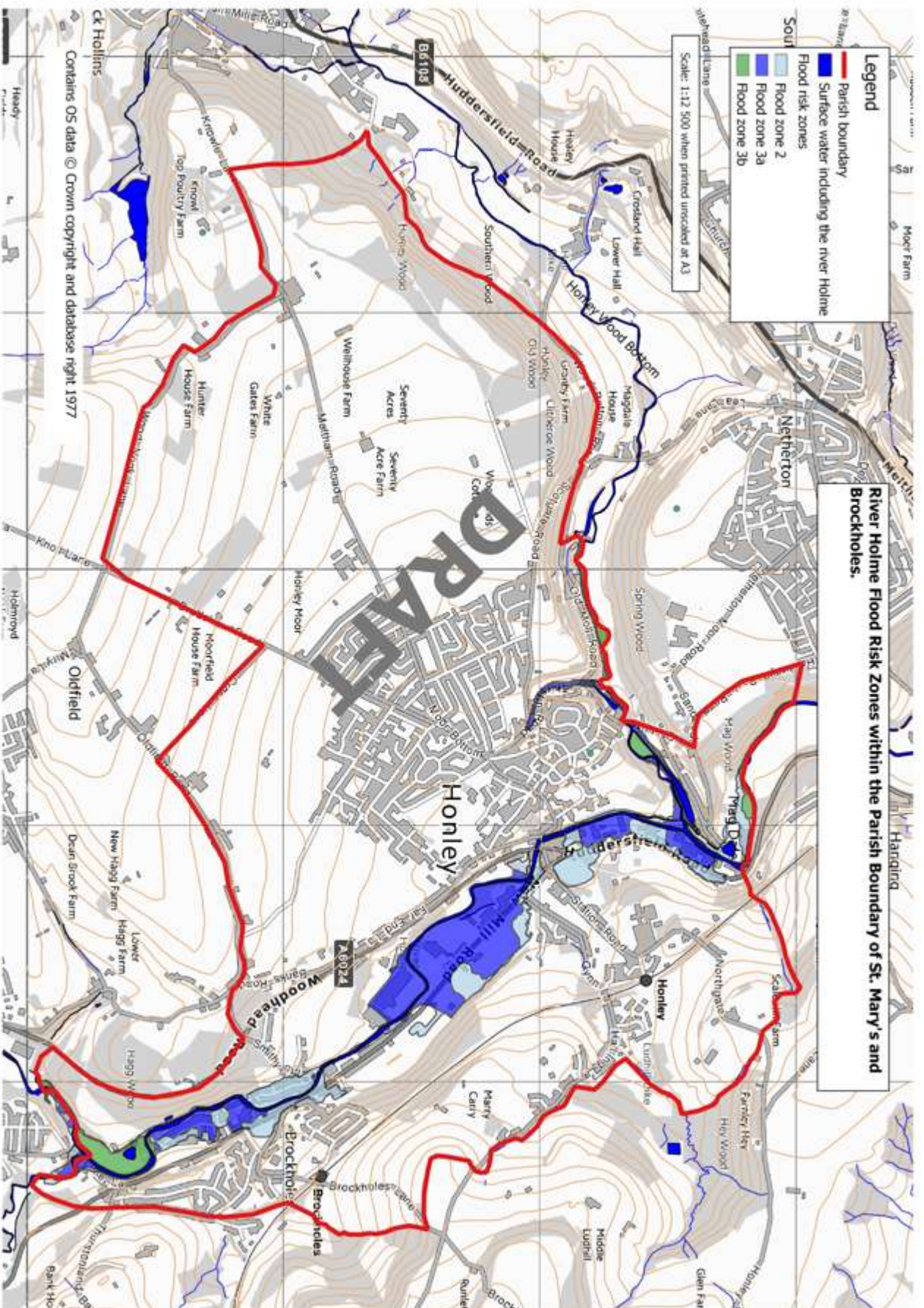
1. Brief review of minutes from previous meeting on 21st February 2017, where lists of aspirations and potential activities were drawn up (see notes of meeting of 21-2-17).
2. Project progress
3. Practical activities
 - a. Parish boundaries (map from Bill Kemp)- see attached showing both the parish boundary and the areas of greatest flood risk.
 - b. Kim Warren (River Holme connections) gave a talk on the activities of River Holme connections and on stewardship possibilities. See Annex 1 below.
 - c. St Mary's prayer walk initiative could be linked to the following:
 - d. Kirklees Council initiative on walking for health – includes riverside walks
[<https://www.walkingforhealth.org.uk/walkfinder/kirklees-walking>]. There are opportunities to define and or utilise additional routes and include a prayer route.
 - e. Jeff Keenlyside (river stewardship scheme) – will come and speak in July on a date to be fixed.
 - f. Plans for incredible edible St Mary's are under development, but due to the repairs to the church, the start has been deferred until later in the year.
 - g. Schools – we await the end of key stage 2 sats for the first of these at Primary level. Liam to liaise with Honley school.
 - h. Other groups (outreach is in abeyance until we get our own activities properly underway)
4. Science
 - a. River Holme and climate change – a joint event is planned for the summer where the climate, hydrology and ecology of the river [Warren Goodall] will be outlined and opportunities provided to

discuss. This will give us the baseline. [new idea is to make this a more open event to the Holme Valley with an evening programme, but setting it out as a major seminar].

- b. Report on Conference on 9th March 2017 – well attended and set us up well – we need to add to the follow-ups..
 - c. River Holme Connections event on 21st March 2017 was attended by a few from St Mary's. Was the launch of the new name.
 - d. River Stewardship and local business meeting on 28th April was attended and contacts made with the then MPs – Barry Shearman indicated he would like to be involved. Now that there is a new MP for Honley; she needs to be engaged.
 - e. Liturgical matters progress report – Liam is to run a sermon series in June/July, starting with Genesis¹. Then: God's judgement; Salvation/baptism; Water and God's new creation. All manuscripts will be made available. In addition, Eucharistic propers, with introduction to penance will be prepared. Further materials will be prepared for the Sunday Club in conjunction with the schools materials.
- 5. Summary & next steps – begin to implement some of the already planned activities
 - 6. Meeting ended with tea and coffee

Annex 2 is the slides from the meeting

¹ These minutes were prepared on 20th June. The first of these sermons was delivered admirably on Sunday 18th June. The text will be circulated.



Annex 1



Activities of River Holme Connections (RHC) [<https://www.riverholmeconnections.org/>] and ideas related to stewardship opportunities.

Kim explained the range of activities and funding for RHC, a charity. Several major grants have been obtained and so far much of the work has related to invasive species control, via volunteer groups and CSR activities from Company donations of staff time. On-going major work includes the reconstruction of the Duck feeding area in Holmfirth and some other riverside enhancements to improve the attractiveness of the River Holme. Recently, a survey has identified invasive species in the Armitage Bridge area and at the Western boundary of St Mary's Parish in the Holme and Mag Rivers. One invasive 'bash' was planned for 20th May and a second for 30th June (Mag) as below.

Mag Brook Balsam Bash and Alien Invaders - Friday 30th June 6pm – 8pm Meet at St Mary's Church, Honley

Join River Holme Connections for a summer evening balsam bash and wander through Magdale and along the Mag Brook. En route we will be looking at a range of invasive plants and how they can be treated. Tools and refreshments provided. All ages welcome.

RHC have identified many of the landowners along the Holme River catchment and can potentially provide a link if and when Parishes decide to adopt part of the River. It was agreed that St Mary's would pursue information to assist in deciding if and how this could be done/appropriate.

Kim gave an overview of invasive species:

These are exacerbated by the changing climate as ambient temperatures increase. Japanese Knotweed is a chronic problem and RHC utilise the expertise of Yorkshire Wildlife Trust for targeted controls. The four main invasives that have been found in the catchment are shown below.



JAPANESE KNOTWEED



HIMALAYAN BALSAM



GIANT HOGWEED



FLOATING PENNYWORT

The landowner in the Honley catchment of the Mag Brook is supportive of efforts to remove Giant Hogweed. This is also supported by the Friends of Mag Wood group (Debbie). There is also Floating Pennywort at Lord's Mill dam. This would be a potential stewardship area for St Mary's.

Annex 2

Slides from the meeting

Opening prayer

SCIENTISTS IN CONGREGATIONS

SCIENTISTS IN CONGREGATIONS

Water of Life – Our faith and a changing climate

Templeton Foundation award

St Mary's & St George's meeting
15th May 2017

SCIENTISTS IN CONGREGATIONS

Agenda

1. Brief review of minutes from previous meeting on 21st February 2017
2. Project progress
 - a. Practical
 - i. Parish boundaries (map from Bill Kemp)
 - ii. Kim Warren (River Holme connections) on stewardship possibilities
 - iii. St Mary's prayer walk initiative
 1. Kirklees Council initiative on Riverside walks
 2. Jeff Keenlyside (steward) – will come and speak in July
 - iv. Plans for incredible edible St Mary's
 - v. Schools
 - vi. Other groups (outreach)

SCIENTISTS IN CONGREGATIONS

Previous minutes

The substantive discussion was around: Where are we now? What do we believe about science and our faith?

Climate change and the River Holme – how do we look (differently) at this through the lens of science or through faith

SCIENTISTS IN CONGREGATIONS

SCIENCE		FAITH
Custodial and moral duty		
Food chain – e.g. upland grazing		We don't know what will happen tomorrow – faith tells us to rely on God
How are changing rainfall patterns going to change flood risk and drought?		Jesus is part of (not separate from) the earth
How can science help us to respond?		To respond in a positive way
How can we make it better and exploit/manage river?		
New Mill is on the flood plain		How do we care for others? Take people in when and event comes? (this is also for others not only people of faith). Should we lead in preparing/planning, with others?
Schools (witness) (our teachers?)		
New Mill (and Brockholes) is on the flood plain		Ours, others anxiety
		Listening groups?
		'safe space' provision
		prayers
		Just be open and honest about relying on faith

SCIENTISTS IN CONGREGATIONS

Schools (witness) (our teachers?)		
New Mill (and Brockholes) is on the flood plain		Ours, others anxiety
		Listening groups?
		'safe space' provision
		prayers
		Just be open and honest about relying on faith
What information do we want to impart and who do we want to involve?		
Good materials:	<ul style="list-style-type: none"> • Powerpoints • Information sheets • Site visits • What is the state of the river? 	Need to work up an approach that presents: "because of my faith this is important to me – and may be different for others".
Where is the information about the state of the river in our Parish?		
What is the likelihood of serious problems in the future?		
How can we use this for amenity enhancement?		

SCIENTISTS IN CONGREGATIONS

Next steps

1. Attend and reflect on the Water of Life conference on 9th March 2017 and consider attending the River 2015* event on 21st March 2017 at Holmfirth.
2. Develop materials to help understand the current state of the River Holme catchment (and the life within it).
3. Review how this is likely to change in future.
4. In parallel consider the faith questions and objectives in the Table above.
5. Progress the Prayer walk plans and any other initiatives arising from the conference on 9th March.

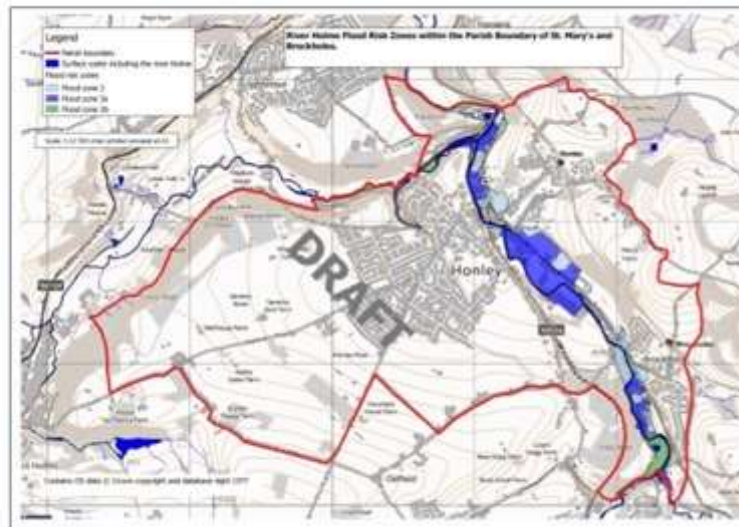
*Now called 'River Holme Connections'.

SCIENTISTS IN CONGREGATIONS

Agenda part 1

- a. Practical
 - i. Parish boundaries (see map from Bill Kemp)
 - ii. Kim Warren (River Holme connections) on stewardship possibilities
 - iii. St Mary's prayer walk initiative
 1. Kirklees Council initiative on Riverside walks
 2. Jeff Keenlyside (steward) – will come and speak in July
 - iv. Plans for incredible edible St Mary's
 - v. Schools
 - vi. Other groups (outreach)

SCIENTISTS IN CONGREGATIONS



Thanks
to Bill
Kemp

SCIENTISTS IN CONGREGATIONS

Kim Warren

- River Holme Connections

<https://www.riverholmeconnections.org/>

- River Holme Connections launch - 21st March
- River Stewardship and local business meeting - 28th April



SCIENTISTS IN CONGREGATIONS

St Mary's prayer walk initiative

1. Kirklees Council initiative on Riverside walks (www.Kirklees.gov.uk/walking)
2. Jeff Keenlyside (Steward) – will attend meeting in July

SCIENTISTS IN CONGREGATIONS

Honley Woods



SCIENTISTS IN CON

Incredible edible St Mary's

- Holmfirth transition towns (HoTT) to advise
 - Area 1 outside west wall (end of Parish hall)
 - Area 2 southern side – east of parish hall
- Timetable

SCIENTISTS IN CONGREGATIONS

Schools

- Honley Juniors....

SCIENTISTS IN CONGREGATIONS

Other outreach

- University inter-faith event in Autumn
- New Mill and Holmfirth
- Armitage Bridge

SCIENTISTS IN CONGREGATIONS

Science

- River Holme and climate change
- Report on Conference - 9th March 2017

SCIENTISTS IN CONGREGATIONS

2011 KMDC Preliminary flood risk assessment - Table 2 - Surface Water Flood Risk across Kirklees

Settlement Area: No of Properties affected Huddersfield 5500
Dewsbury 1900
Holmfirth/Honley 1600
Cleckheaton/Liversedge 1400
Batley 1100
Marsden 450
Skelmanthorpe/Clayton West 420
Mirfield 320
Kirkburton 170
Meltham 160
Denby Dale 150
Heckmondwike 90
Shepley/Shelley 90
Flockton 10
Total in main settlements 13360

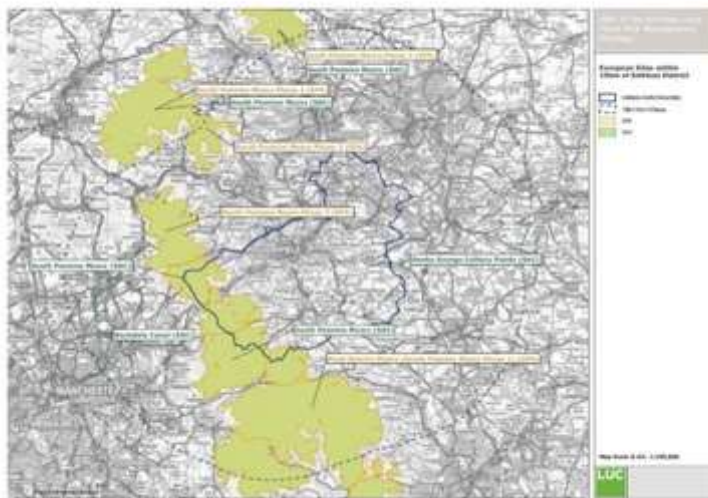
SCIENTISTS IN CONGREGATIONS

2012 Strategy

- Too many plans: SFRA, RBMP, CFMP, SWMP, PFRA; National Strategy...
- Holme Valley Holmfirth, Honley, Brockholes, New Mill (Most centres near to River Holme and New Mill Dyke) River Holme, Surface Water flooding:

2500 properties at odds of 200:1

SCIENTISTS IN CONGREGATIONS



Habitats Regulations Assessment

SCIENTISTS IN CONGREGATIONS

Surface Water Management Plan 2011: Effect of Climate Change on Future Flooding

- In general terms, the main implications are:
 - More frequent and intense rainfall events causing flash flooding to low-lying areas
 - More and faster surface water runoff and overland flows causing sewers, drains and rivers to overflow
 - Rising groundwater levels causing increased spring source activity and higher spring flows

SCIENTISTS IN CONGREGATIONS

Liturgical matters

SCIENTISTS IN CONGREGATIONS

Next steps

- Stewardship
- Prayer walk
- Edible Honley
- Science and the river (including ecosystems)
- Liturgy
 - Bringing it together
- Schools
-

SCIENTISTS IN CONGREGATIONS

Closing prayer

SCIENTISTS IN CONGREGATIONS